

PART N.E. 1/4 OF SEC. 29, T.7N., R.1W., S.L.B. & M.

# HILL TOP SUBDIVISION

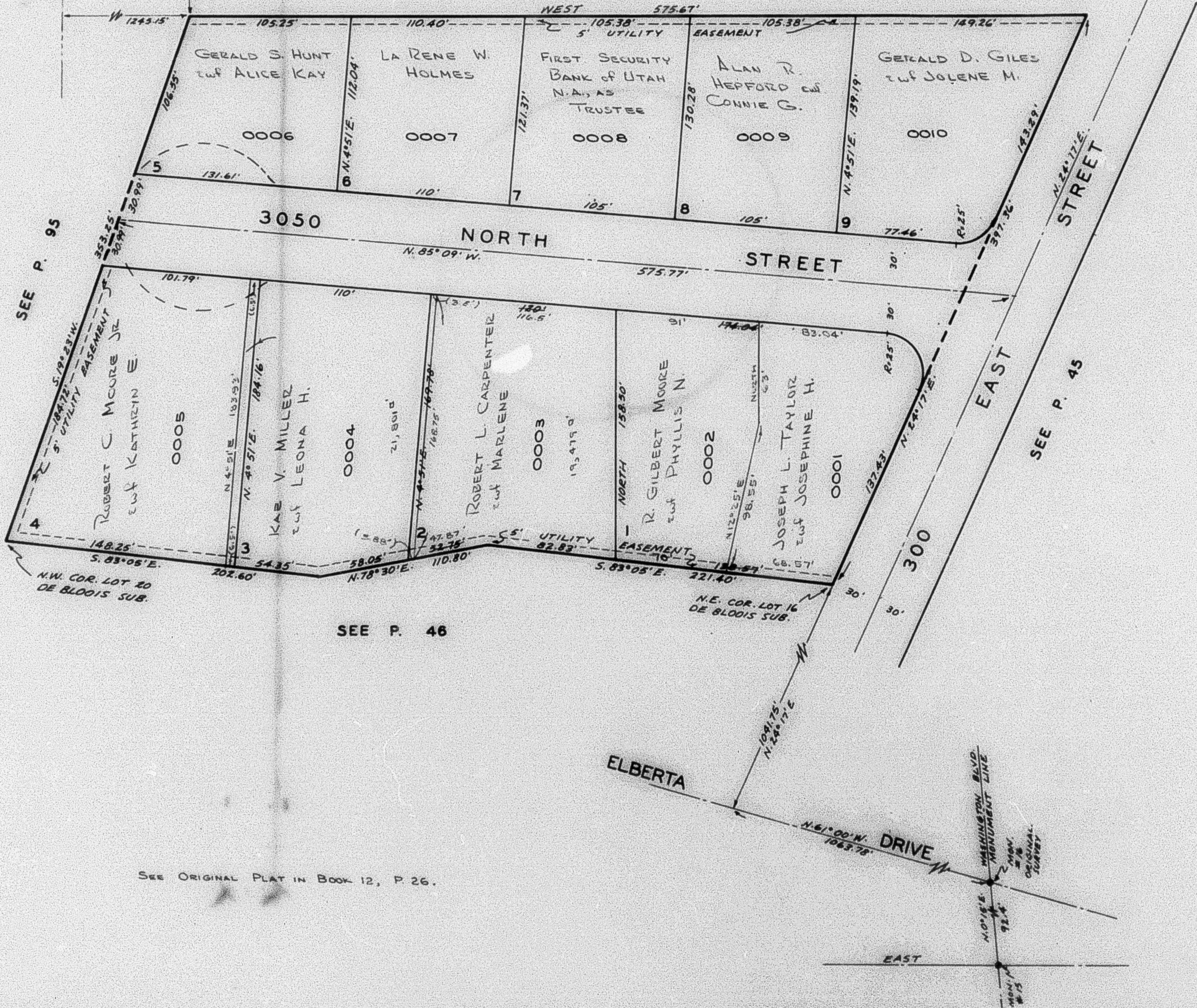
IN NORTH OGDEN

TAXING UNIT: 10

SCALE 1" - 50'

PREFIX: 17-047

SEE P. 40



SEE P. 46

SEE ORIGINAL PLAT IN BOOK 12, P. 26.